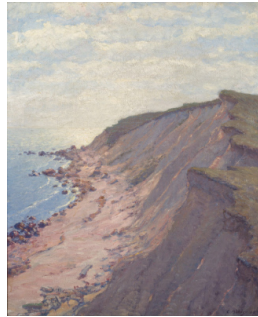


# Basic Report

---



**Title:** Boathouse on the Beach (Horseneck Beach, Massachusetts)  
**Date:** 1916  
**Primary Maker:** Clifford Warren Ashley  
**Medium:** Oil on canvas



**Title:** Cliffs at Cuttyhunk  
**Date:** 1919  
**Primary Maker:** Clifford Warren Ashley  
**Medium:** Oil on canvas



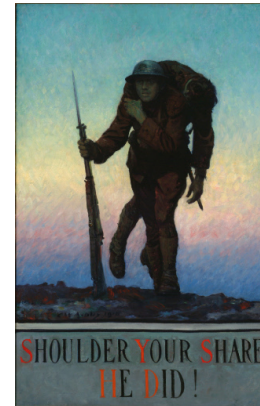
**Title:** The End  
**Date:** 1903  
**Primary Maker:** Clifford Warren Ashley  
**Medium:** Ink and graphite on Bristol board



**Title:** Neither could, by any possibility, be the long, loose-jointed, irresponsible form of our war correspondent  
**Date:** 1907  
**Primary Maker:** Clifford Warren Ashley  
**Medium:** Oil on canvas



**Title:** Outfitting the C. W. Morgan  
**Date:** 1916  
**Primary Maker:** Clifford Warren Ashley  
**Medium:** Oil on canvas



**Title:** Shoulder Your Share, He Did!  
**Date:** c. 1918  
**Primary Maker:** Clifford Warren Ashley  
**Medium:** Oil on canvas



**Title:** Then another and another appeared – A rat-queued horde, . . . sliding toward me, in a glitter of keen knives  
**Date:** 1912  
**Primary Maker:** Clifford Warren Ashley  
**Medium:** Oil on board