

# Basic Report



**Title:** Amusing drawings of a cherub and a cat on letter-headed paper  
**Date:** not dated  
**Primary Maker:** Edward Burne-Jones  
**Medium:** Chalk on paper



**Title:** Beside a Summer Sea  
**Date:** 1896  
**Primary Maker:** Philip Burne-Jones  
**Medium:** Watercolor on paper



**Title:** The Briar Wood, Briar Rose Series  
**Date:** 1892  
**Primary Maker:** Edward Burne-Jones  
**Medium:** Photogravure



**Title:** Christ in Majesty with Cherubim and Serphim (study for mosaic)  
**Date:** c. 1881-1882  
**Primary Maker:** Edward Burne-Jones  
**Medium:** Graphite on paper



**Title:** 'Cinderella flees the ball, leaving one of her glass slippers'  
**Date:** c. 1865  
**Primary Maker:** Morris, Marshall, Faulkner & Co. (1861–1875)  
**Medium:** Hand painted polychrome decoration in overglaze enamel on tin-glazed Dutch tile



**Title:** The Council Chamber  
**Date:** 1872-1892  
**Primary Maker:** Edward Burne-Jones  
**Medium:** Oil on canvas



**Title: The Council Chamber, Briar Rose Series**

**Date:** 1892  
**Primary Maker:** Edward Burne-Jones  
**Medium:** Photogravure



**Title: Cupid's Hunting Fields**

**Date:** 1880  
**Primary Maker:** Edward Burne-Jones  
**Medium:** Oil and gold paint on gesso relief on mahogany panel



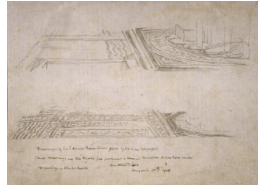
**Title: Drapery Studies**

**Date:** not dated  
**Primary Maker:** Edward Burne-Jones  
**Medium:** Graphite on laid paper



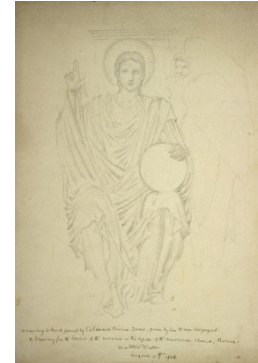
**Title: Drawing for Enthroned Man, "The Council Chamber," Briar Rose**

**Date:** c. 1884-1892  
**Primary Maker:** Edward Burne-Jones  
**Medium:** Chalk on tracing paper



**Title: Drawing for Pavement, "The Council Chamber," Briar Rose**

**Date:** not dated  
**Primary Maker:** Edward Burne-Jones  
**Medium:** Chalk on laid paper



**Title: Drawing for the Figure of Christ, American Church, Rome**

**Date:** c. 1881-1885  
**Primary Maker:** Edward Burne-Jones  
**Medium:** Graphite on paper



**Title: Drawing for Throne, "The Council Chamber," Briar Rose**

**Date:** c. 1888-1892  
**Primary Maker:** Edward Burne-Jones  
**Medium:** Chalk on tracing paper



**Title: Drawing for Throne, "The Council Chamber," Briar Rose**

**Date:** c. 1884-1892  
**Primary Maker:** Edward Burne-Jones  
**Medium:** Black chalk on paper



**Title: The Garden Court, Briar Rose Series**

**Date:** 1892  
**Primary Maker:** Edward Burne-Jones  
**Medium:** Photogravure



**Title: Hymenaeus**

**Date:** 1869

**Primary Maker:** Edward Burne-Jones

**Medium:** Oil paint over gold leaf on panel



**Title: Hymen, the goddess of marriage holding a harp**

**Date:** 1876

**Primary Maker:** Edward Burne-Jones

**Medium:** Graphite on paper



**Title: The Knight Entering the Briar Wood**

**Date:** c. 1864 and later

**Primary Maker:** Edward Burne-Jones

**Medium:** Graphite, pen, and brown and black ink on paper



**Title: A Married couple being blessed**

**Date:** 1876

**Primary Maker:** Edward Burne-Jones

**Medium:** Graphite on paper



**Title: Mirror of Venus**

**Date:** 1896

**Primary Maker:** Félix Stanisaw Jasinski

**Medium:** Line engraving



**Title: Noah**

**Date:** Designed 1874; manufactured 1909

**Primary Maker:** Edward Burne-Jones

**Medium:** Stained glass



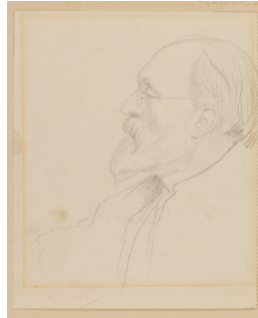


**Title: Pan and Psyche**

**Date:** 1887

**Primary Maker:** Charles William Campbell

**Medium:** Mezzotint



**Title: Portrait of Edward Burne-Jones**

**Date:** c. 1885-1890

**Primary Maker:** George James Howard

**Medium:** Graphite on wove paper



**Title: The Prioress's Tale**

**Date:** 1869-1898

**Primary Maker:** Edward Burne-Jones

**Medium:** Watercolor with gouache on paper laid down on linen



**Title: The Rose Bower, Briar Rose Series**

**Date:** 1892

**Primary Maker:** Edward Burne-Jones

**Medium:** Photogravure



**Title: Six studies for Archangel Figure, American Church, Rome**

**Date:** c. 1881-1882

**Primary Maker:** Edward Burne-Jones

**Medium:** Graphite on paper



**Title: Sketch for "The Council Chamber"**

**Date:** c. 1888

**Primary Maker:** Edward Burne-Jones

**Medium:** Black chalk on buff paper



**Title:** St. Clement  
**Date:** 1891  
**Primary Maker:** Edward Burne-Jones  
**Medium:** Charcoal and wax crayon on paper



**Title:** Studies of Wings, from nature  
**Date:** not dated  
**Primary Maker:** Edward Burne-Jones  
**Medium:** Chalk, ink, graphite, and gouache mounted on paper



**Title:** Study for the Head of Nimue in "The Beguiling of Merlin"  
**Date:** c. 1872-1873  
**Primary Maker:** Edward Burne-Jones  
**Medium:** Watercolor with gouache on paper, mounted on wood



**Title:** Study of a Seated Girl  
**Date:** 1860 and reworked c. 1890  
**Primary Maker:** Edward Burne-Jones  
**Medium:** Blue, brown, and white chalk over graphite on paper



**Title:** Study of a Standing Man Praying  
**Date:** c. 1872  
**Primary Maker:** Edward Burne-Jones  
**Medium:** Graphite on paper



**Title:** 'The Awakening Castle' from 'Sleeping Beauty'  
**Date:** c. 1865  
**Primary Maker:** Morris, Marshall, Faulkner & Co. (1861–1875)  
**Medium:** Hand painted polychrome decoration in overglaze enamel on tin-glazed Dutch tile



**Title:** Viking Ship

**Date:** 1883-1884

**Primary Maker:** Edward  
Burne-Jones

**Medium:** Enamelled stained  
glass, lead