

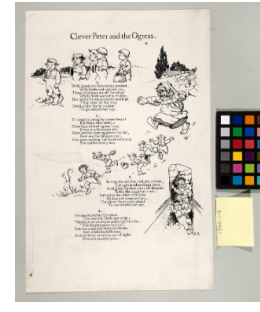
# Basic Report



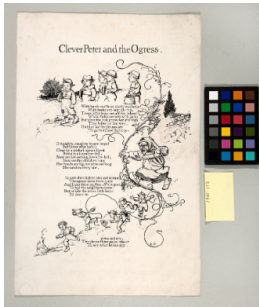
**Title:** Alternate version of "Clever Peter and the Ogress" / All black with soot from head to foot  
**Date:** 1890  
**Primary Maker:** Katharine Pyle  
**Medium:** Ink on illustration board



**Title:** Alternate version of "Clever Peter and the Ogress" / He sees above the fireplace  
**Date:** 1890  
**Primary Maker:** Katharine Pyle  
**Medium:** Ink on illustration board



**Title:** Alternate version of Clever Peter and the Ogress / With hands and faces nicely washed  
**Date:** 1890  
**Primary Maker:** Katharine Pyle  
**Medium:** Ink on illustration board



**Title:** Alternate version of "Clever Peter and the Ogress" / With hands and faces nicely washed  
**Date:** 1890  
**Primary Maker:** Katharine Pyle  
**Medium:** Ink on illustration board



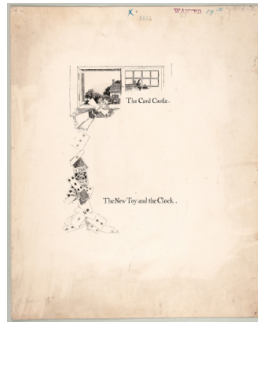
**Title:** Alternate version of "The Noah's Ark"  
**Date:** 1891  
**Primary Maker:** Katharine Pyle  
**Medium:** Ink on illustration board



**Title:** Alternate version of "The Wedding"  
**Date:** c. 1902  
**Primary Maker:** Katharine Pyle  
**Medium:** Ink on illustration board



**Title:** The Best Loved of All  
**Date:** 1893  
**Primary Maker:** Katharine Pyle  
**Medium:** Ink on illustration board



**Title:** The Card Castle  
**Date:** 1892  
**Primary Maker:** Katharine Pyle  
**Medium:** Ink on illustration board



**Title:** The children sat down at the table, and the water-sprite set before them a dish of dumplings...  
**Date:** 1918  
**Primary Maker:** Katharine Pyle  
**Medium:** Gouache, paint, and graphite on illustration board



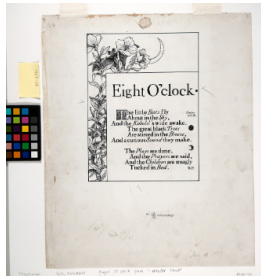
**Title:** Clever Peter and the Ogress / And none too soon  
**Date:** 1890  
**Primary Maker:** Katharine Pyle  
**Medium:** Ink on illustration board



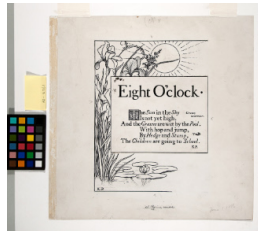
**Title:** The Dream of the Toy  
**Date:** 1898  
**Primary Maker:** Katharine Pyle  
**Medium:** Ink on illustration board



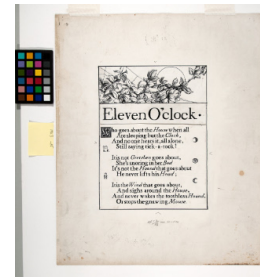
**Title:** Each one wanted to get the flicht from him  
**Date:** 1925  
**Primary Maker:** Katharine Pyle  
**Medium:** Graphite and ink on illustration board



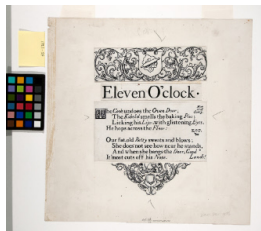
**Title:** Eight O'Clock, from "Wonder Clock"  
**Date:** 1887  
**Primary Maker:** Katharine Pyle  
**Medium:** Ink on illustration board



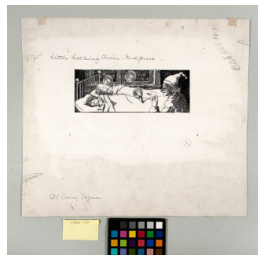
**Title:** Eight O'Clock, from "Wonder Clock"  
**Date:** 1886  
**Primary Maker:** Katharine Pyle  
**Medium:** Ink on illustration board



**Title:** Eleven O'Clock, from "Wonder Clock"  
**Date:** 1886  
**Primary Maker:** Katharine Pyle  
**Medium:** Ink on illustration board



**Title:** Eleven O'Clock, from "Wonder Clock"  
**Date:** 1886  
**Primary Maker:** Katharine Pyle  
**Medium:** Ink on illustration board



**Title:** Endpiece for "Tommy Toyman"  
**Date:** 1904  
**Primary Maker:** Katharine Pyle  
**Medium:** Ink on illustration board



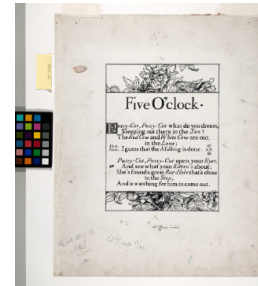
**Title:** The Fairy Prince and Doll  
**Date:** 1897  
**Primary Maker:** Katharine Pyle  
**Medium:** Ink on illustration board



**Title:** Father mouse came staggering back carrying a little white mouse in his arms  
**Date:** 1917  
**Primary Maker:** Katharine Pyle  
**Medium:** Graphite and ink on paper



**Title:** Five O'Clock, from "Wonder Clock"  
**Date:** 1886  
**Primary Maker:** Katharine Pyle  
**Medium:** Ink on illustration board



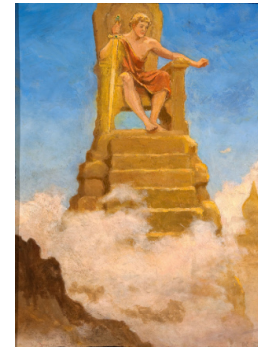
**Title:** Five O'Clock, from "Wonder Clock"  
**Date:** 1886  
**Primary Maker:** Katharine Pyle  
**Medium:** Ink on illustration board



**Title:** Four O'Clock, from "Wonder Clock"  
**Date:** 1886  
**Primary Maker:** Katharine Pyle  
**Medium:** Ink on illustration board



**Title:** Four O'Clock, from "Wonder Clock"  
**Date:** 1886  
**Primary Maker:** Katharine Pyle  
**Medium:** Ink on illustration board



**Title:** Frey Mounts the Height of Hlidskialf  
**Date:** 1930  
**Primary Maker:** Katharine Pyle  
**Medium:** Oil on illustration board



**Title:** Frontispiece for The Counterpane Fairy  
**Date:** 1928  
**Primary Maker:** Katharine Pyle  
**Medium:** Ink and graphite on illustration board



**Title:** "I don't believe I'll stay here."  
**Date:** 1917  
**Primary Maker:** Katharine Pyle  
**Medium:** Ink and graphite on illustration board

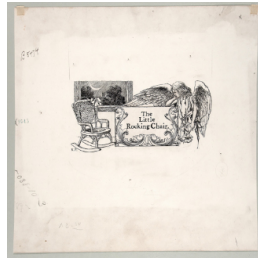


**Title:** Jack Appears in the Box  
**Date:** 1897  
**Primary Maker:** Katharine Pyle  
**Medium:** Ink on illustration board





**Title:** Like a whirlwind she rushed away with him  
**Date:** 1921  
**Primary Maker:** Katharine Pyle  
**Medium:** Ink and watercolor on paper mounted on board



**Title:** The Little Rocking Chair  
**Date:** not dated  
**Primary Maker:** Katharine Pyle  
**Medium:** Ink on illustration board



**Title:** Merrymind and His Burden  
**Date:** 1916  
**Primary Maker:** Katharine Pyle  
**Medium:** Gouache, paint, and graphite on illustration board



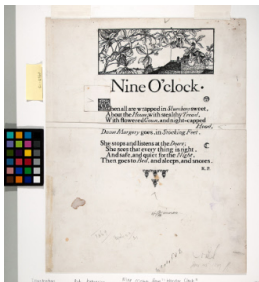
**Title:** The Money Jug  
**Date:** 1905  
**Primary Maker:** Katharine Pyle  
**Medium:** Ink on illustration board



**Title:** My Lost Doll  
**Date:** 1897  
**Primary Maker:** Katharine Pyle  
**Medium:** Ink on illustration board



**Title:** Nine O'Clock, from "Wonder Clock"  
**Date:** 1886  
**Primary Maker:** Katharine Pyle  
**Medium:** Ink on illustration board



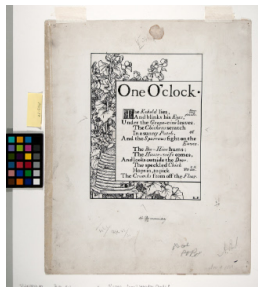
**Title:** Nine O'Clock, from "Wonder Clock"  
**Date:** 1887  
**Primary Maker:** Katharine Pyle  
**Medium:** Ink on illustration board



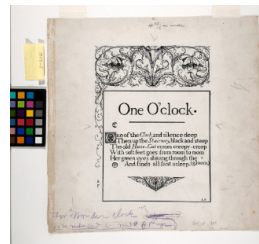
**Title:** The Noah's Ark  
**Date:** 1891  
**Primary Maker:** Katharine Pyle  
**Medium:** Ink on illustration board



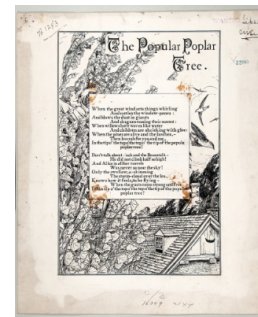
**Title:** The Old Tin Sheep  
**Date:** 1897  
**Primary Maker:** Katharine Pyle  
**Medium:** Ink on illustration board



**Title:** One O'Clock, from "Wonder Clock"  
**Date:** 1886  
**Primary Maker:** Katharine Pyle  
**Medium:** Ink on illustration board



**Title:** One O'Clock, from "Wonder Clock"  
**Date:** 1886  
**Primary Maker:** Katharine Pyle  
**Medium:** Ink on illustration board



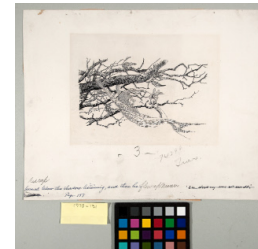
**Title:** The Popular Poplar Tree  
**Date:** 1889  
**Primary Maker:** Katharine Pyle  
**Medium:** Ink on illustration board



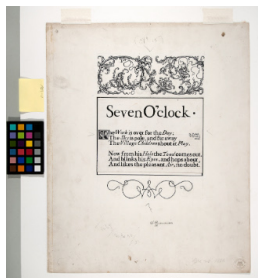
**Title:** Portrait of Child with Toy  
**Date:** not dated  
**Primary Maker:** Katharine Pyle  
**Medium:** Oil on canvas



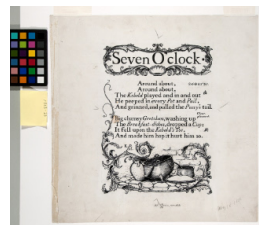
**Title:** Recovery of the Sword  
**Date:** 1897  
**Primary Maker:** Katharine Pyle  
**Medium:** Ink on illustration board



**Title:** Red Cap hovered below the shadow listening, and then he flew up nearer  
**Date:** 1902  
**Primary Maker:** Katharine Pyle  
**Medium:** Ink on illustration board



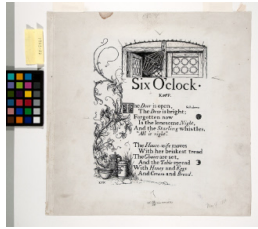
**Title:** Seven O'Clock, from "Wonder Clock"  
**Date:** 1886  
**Primary Maker:** Katharine Pyle  
**Medium:** Ink on illustration board



**Title:** Seven O'Clock, from "Wonder Clock"  
**Date:** 1886  
**Primary Maker:** Katharine Pyle  
**Medium:** Ink on illustration board



**Title:** Six O'Clock, from "Wonder Clock"  
**Date:** 1886  
**Primary Maker:** Katharine Pyle  
**Medium:** Ink on illustration board



**Title:** Six O'Clock, from "Wonder Clock"  
**Date:** 1886  
**Primary Maker:** Katharine Pyle  
**Medium:** Ink on illustration board



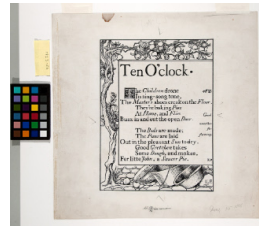
**Title:** Tailpiece for The Cat that Winked  
**Date:** 1918  
**Primary Maker:** Katharine Pyle  
**Medium:** Ink on illustration board



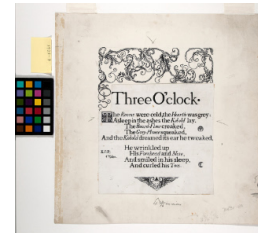
**Title:** Tailpiece for The Christmas Cuckoo  
**Date:** 1916  
**Primary Maker:** Katharine Pyle  
**Medium:** Ink on illustration board



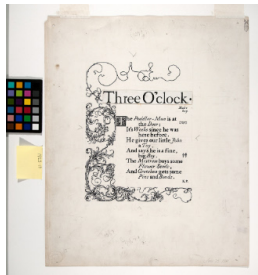
**Title:** Ten O'Clock, from "Wonder Clock"  
**Date:** 1886  
**Primary Maker:** Katharine Pyle  
**Medium:** Ink on Bristol board



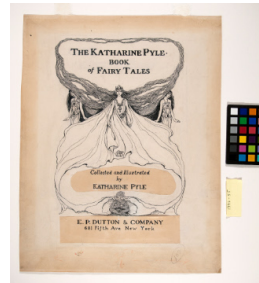
**Title:** Ten O'Clock, from "Wonder Clock"  
**Date:** 1886  
**Primary Maker:** Katharine Pyle  
**Medium:** Ink on illustration board



**Title:** Three O'Clock, from "Wonder Clock"  
**Date:** 1886  
**Primary Maker:** Katharine Pyle  
**Medium:** Ink on illustration board



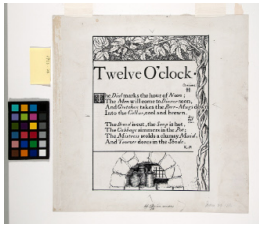
**Title:** Three O'Clock, from "Wonder Clock"  
**Date:** 1886  
**Primary Maker:** Katharine Pyle  
**Medium:** Ink on illustration board



**Title:** Title Page for The Katharine Pyle Book of Fairy Tales  
**Date:** 1925  
**Primary Maker:** Katharine Pyle  
**Medium:** Ink on paper



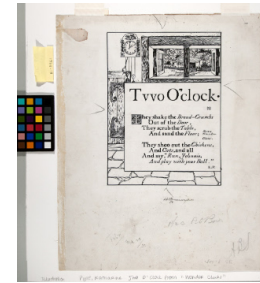
**Title:** Twelve O'Clock, from "Wonder Clock"  
**Date:** 1887  
**Primary Maker:** Katharine Pyle  
**Medium:** Ink on illustration board



**Title:** Twelve O'Clock, from "Wonder Clock"  
**Date:** 1886  
**Primary Maker:** Katharine Pyle  
**Medium:** Ink on illustration board



**Title:** Two O'Clock, from "Wonder Clock"  
**Date:** 1886  
**Primary Maker:** Katharine Pyle  
**Medium:** Ink on illustration board



**Title:** Two O'Clock, from "Wonder Clock"  
**Date:** 1886  
**Primary Maker:** Katharine Pyle  
**Medium:** Ink on illustration board



**Title:** The Wedding  
**Date:** 1902  
**Primary Maker:** Katharine Pyle  
**Medium:** Ink on illustration board