

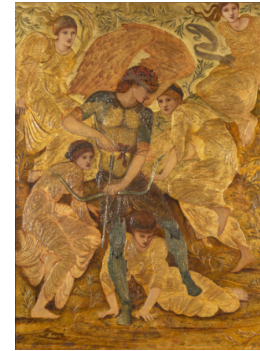
Basic Report



Title: Hymenaeus
Date: 1869
Primary Maker: Edward Burne-Jones
Medium: Oil paint over gold leaf on panel



Title: The Council Chamber
Date: 1872-1892
Primary Maker: Edward Burne-Jones
Medium: Oil on canvas



Title: Cupid's Hunting Fields
Date: 1880
Primary Maker: Edward Burne-Jones
Medium: Oil and gold paint on gesso relief on mahogany panel



Title: Viking Ship
Date: 1883-1884
Primary Maker: Edward Burne-Jones
Medium: Enamelled stained glass, lead



Title: Noah
Date: Designed 1874; manufactured 1909
Primary Maker: Edward Burne-Jones
Medium: Stained glass



Title: 'Cinderella flees the ball, leaving one of her glass slippers'
Date: c. 1865
Primary Maker: Morris, Marshall, Faulkner & Co. (1861–1875)
Medium: Hand painted polychrome decoration in overglaze enamel on tin-glazed Dutch tile



Title: 'The Awakening Castle' from 'Sleeping Beauty'

Date: c. 1865

Primary Maker: Morris, Marshall, Faulkner & Co. (1861–1875)

Medium: Hand painted polychrome decoration in overglaze enamel on tin-glazed Dutch tile