

Basic Report



Title: Romeo and Juliet
Date: 1869-1870
Primary Maker: Ford Madox Brown
Medium: Oil on canvas



Title: Hymenaeus
Date: 1869
Primary Maker: Edward Burne-Jones
Medium: Oil paint over gold leaf on panel



Title: The Council Chamber
Date: 1872-1892
Primary Maker: Edward Burne-Jones
Medium: Oil on canvas



Title: The White Cockade
Date: 1862
Primary Maker: John Everett Millais
Medium: Oil on panel



Title: The Green Butterfly
Date: c. 1879-1881
Primary Maker: Albert Joseph Moore
Medium: Oil on wood panel



Title: The Last Parting of Helga and Gunnlaug
Date: c. 1880-1885
Primary Maker: Charles Fairfax Murray
Medium: Oil on board



Title: Mnemosyne
Date: 1881
Primary Maker: Dante Gabriel Rossetti
Medium: Oil on canvas



Title: Mary Magdalene
Date: 1877
Primary Maker: Dante Gabriel Rossetti
Medium: Oil on canvas



Title: La Bella Mano
Date: 1875
Primary Maker: Dante Gabriel Rossetti
Medium: Oil on canvas



Title: Water Willow
Date: 1871
Primary Maker: Dante Gabriel Rossetti
Medium: Oil on canvas, glued onto wood panel



Title: Found
Date: Designed 1853; begun 1859; unfinished
Primary Maker: Dante Gabriel Rossetti
Medium: Oil on canvas



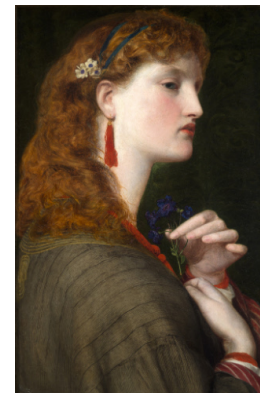
Title: Veronica Veronese
Date: 1872
Primary Maker: Dante Gabriel Rossetti
Medium: Oil on canvas



Title: Lady Lilith
Date: 1866-1868 (altered 1872-1873)
Primary Maker: Dante Gabriel Rossetti
Medium: Oil on canvas



Title: Mary Magdalene
Date: c. 1859
Primary Maker: Frederick Sandys
Medium: Oil on wood panel



Title: May Margaret
Date: 1865-1866
Primary Maker: Frederick Sandys
Medium: Oil on canvas



Title: Portrait of Eveleen Tennant (later Mrs. F.W. H. Myers)
Date: 1876-1879
Primary Maker: George Frederic Watts
Medium: Oil on canvas



Title: The Waterfall
Date: 1853
Primary Maker: John Everett Millais
Medium: Oil on panel



Title: The Highland Lassie
Date: 1854
Primary Maker: John Everett Millais
Medium: Oil on board



Title: The Guardian Angel
Date: c. 1900
Primary Maker: Alexander Fisher
Medium: Pierced and chased silver, set with enamel on copper



Title: Necklace
Date: c. 1900
Primary Maker: Walter Child
Medium: Silver, gold, and polychrome enamel set with amethyst and pearls



Title: Peacock Brooch
Date: c. 1902
Primary Maker: Charles Robert Ashbee
Medium: Gold with polychrome enamel, opal, pearls, turquoise, brilliants, and ruby



Title: Brooch/Pendant
Date: c. 1900
Primary Maker: Charles Robert Ashbee
Medium: Enamel on copper, silver with cabochon amethyst



Title: Pendant: The Song
Date: 1904
Primary Maker: Phoebe Anna Traquair
Medium: Polychrome enamel and silver foil on copper set in gold



Title: The Octopus (Death of a Mermaid)
Date: 1929
Primary Maker: Ernestine Evans Mills
Medium: Polychrome enamel on copper, silver



Title: Biscuit Box
Date: c. 1903
Primary Maker: Archibald Knox
Medium: Pewter and enamel on copper



Title: Covered Box with Peacock
Date: 1902
Primary Maker: Charles Robert Ashbee
Medium: Silver, enamel on copper



Title: Casket
Date: 1903
Primary Maker: Kate Harris
Medium: Silver with enamel on copper



Title: Charger with England's Emblem: Saint George Slaying the Dragon
Date: 1907
Primary Maker: Walter Crane
Medium: Earthenware with polychrome and luster glazes



Title: Cupid's Hunting Fields
Date: 1880
Primary Maker: Edward Burne-Jones
Medium: Oil and gold paint on gesso relief on mahogany panel



Title: Parlour Cabinet
Date: c. 1871
Primary Maker: Bruce James Talbert
Medium: Ebonized wood, painted leather, and brass



Title: Loop Handled Dish
Date: 1903
Primary Maker: Charles Robert Ashbee
Medium: Silver



Title: Lancastrian Vase
Date: 1912
Primary Maker: Gordon Mitchell Forsyth
Medium: Luster-painted glazed ceramic



Title: Vase with Horses
Date: c. 1902
Primary Maker: Hannah Bolton Barlow
Medium: Salt glazed and painted stoneware

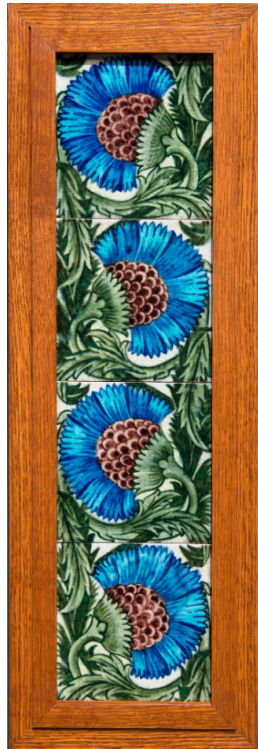


Title: Set of Four BBB Tiles

Date: c. 1884

Primary Maker: William Frend
De Morgan

Medium: Polychrome glazed
earthenware

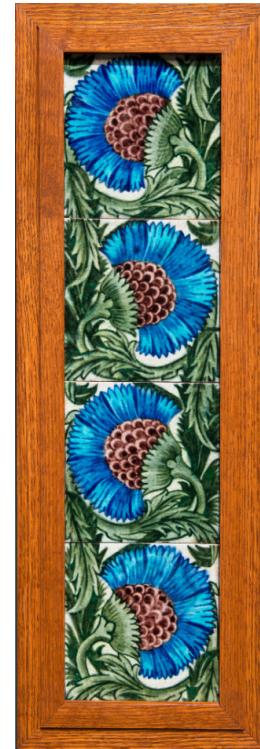


Title: Set of Four Tiles with Persian style floral motif

Date: c. 1884

Primary Maker: William Frend
De Morgan

Medium: Polychrome glazed
earthenware



Title: Set of Four Tiles with Persian style floral motif

Date: c. 1884

Primary Maker: William Frend
De Morgan

Medium: Polychrome glazed
earthenware



Title: Set of Four Tiles with Persian style floral motif
Date: c. 1884
Primary Maker: William Frend De Morgan
Medium: Polychrome glazed earthenware



Title: Charger with Peacocks' Meeting
Date: c. 1890
Primary Maker: William Frend De Morgan
Medium: Red lustre on glazed on earthenware



Title: Replica of Beata Beatrix
Date: c. 1900-1910
Primary Maker: Charles Fairfax Murray
Medium: Oil on canvas



Title: Viking Ship
Date: 1883-1884
Primary Maker: Edward Burne-Jones
Medium: Enamelled stained glass, lead



Title: Chalice
Date: c. 1910-1912 or later
Primary Maker: Edward Spencer
Medium: Silver, ostrich egg, and moonstones



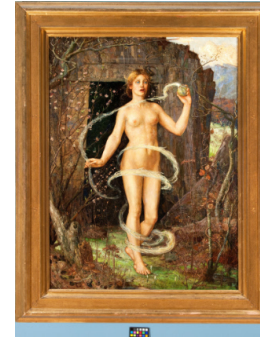
Title: Toilette of a Roman Lady
Date: 1869
Primary Maker: Simeon Solomon
Medium: Oil on canvas



Title: Vase
Date: c. 1890-1900
Primary Maker: Harry J. Powell
Medium: Soda lime glass



Title: Goblet
Date: c. 1900
Primary Maker: Harry J. Powell
Medium: Lead glass, enclosed gold leaf decoration



Title: The Spring Witch
Date: c. 1880
Primary Maker: George Wilson
Medium: Oil on canvas



Title: The Arming of a Knight
Date: 1857-1858[?]
Primary Maker: William Morris
Medium: Painted deal, leather, and nails



Title: Glorious Guendolen's Golden Hair
Date: c. 1856-1857
Primary Maker: William Morris
Medium: Painted deal, leather, and nails



Title: Tobacco Jar in the Form of a Bird
Date: 1891
Primary Maker: Robert Wallace Martin
Medium: Incised and painted salt-glazed stoneware



Title: Tobacco Jar in the Form of a Grotesque
Date: c. 1890
Primary Maker: Robert Wallace Martin
Medium: Stoneware



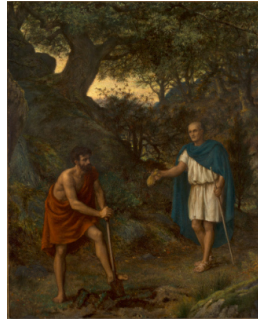
Title: Tobacco Jar in the Form of a Bird
Date: 1901
Primary Maker: Robert Wallace Martin
Medium: Salt-glazed stoneware



Title: Gideon
Date: 1900
Primary Maker: Harold S. Rathbone
Medium: Molded, incised, and painted earthenware plaque



Title: St. Columba's Farewell to the White Horse
Date: 1868
Primary Maker: Alice Boyd
Medium: Oil on board



Title: Timon and Flavius
Date: c. 1878
Primary Maker: Henry Wallis
Medium: Oil on panel



Title: Within the Beguinage
Date: 1905
Primary Maker: Aelfred Fahey
Medium: Oil on wood panel



Title: Bacchanale Necklace
Date: c. 1916
Primary Maker: Cecilia Adams
Medium: Silver and gold with enamel and set with moonstone, pearls, rubies and amethysts



Title: The Mother of Moses
Date: 1860 (first exhibited 1860; undated)
Primary Maker: Simeon Solomon
Medium: Oil on canvas



Title: Leaf Study
Date: 1883
Primary Maker: John Ruskin
Medium: Graphite, ink, and wash on paper



Title: Leaf Study, after John Ruskin

Date: 1883

Primary Maker: Jane Byrd McCall Whitehead

Medium: Graphite and watercolor on paper mounted on blue paper



Title: The Towers of Fribourg, Switzerland

Date: 1856

Primary Maker: John Ruskin

Medium: Pen, black ink, and watercolor over graphite heightened with white on blue paper



Title: Portrait Study of John Ruskin

Date: c. 1857

Primary Maker: George Richmond

Medium: Red and black chalk on grey-blue laid watermarked paper



Title: Necklace

Date: c. 1900-1904

Primary Maker: Archibald Knox

Medium: Gold, set with turquoise matrix and hung with rough pearls



Title: Vase with Dragon Ornament

Date: 1893

Primary Maker: Edwin Bruce Martin

Medium: Incised and painted salt-glazed stoneware



Title: Vase

Date: 1900

Primary Maker: Charles Collis

Medium: Earthenware with incised slip decoration, polychrome enamels, and lead glaze



Title: 'Heros' Vase

Date: c. 1905

Primary Maker: Wardle & Co.

Medium: Slip-decorated and glazed earthenware



Title: Double-sided Face Jug

Date: c. 1911

Primary Maker: Robert Wallace Martin

Medium: Glazed stoneware



Title: Noah

Date: Designed 1874; manufactured 1909

Primary Maker: Edward Burne-Jones

Medium: Stained glass



Title: Academic study of a seated male nude

Date: 1869

Primary Maker: William Wise

Medium: Oil on canvas laid on board



Title: 'Cinderella flees the ball, leaving one of her glass slippers'

Date: c. 1865

Primary Maker: Morris, Marshall, Faulkner & Co. (1861–1875)

Medium: Hand painted polychrome decoration in overglaze enamel on tin-glazed Dutch tile



Title: 'The Awakening Castle' from 'Sleeping Beauty'

Date: c. 1865

Primary Maker: Morris, Marshall, Faulkner & Co. (1861–1875)

Medium: Hand painted polychrome decoration in overglaze enamel on tin-glazed Dutch tile



Title: A female figure holding a palm

Date: not dated

Primary Maker: Charles Fairfax Murray

Medium: Oil on panel



Title: Chagford (A moorland scene)

Date: 1878

Primary Maker: John Brett

Medium: Oil on pasteboard mounted to wooden panel



Title: The Resurrection: Why seek Ye the Living among the Dead; In those days Mary rose in haste and fled into the hill country

Date: 1888

Primary Maker: Phoebe Anna Traquair

Medium: Oil on canvas